



Glass Manufacturer Inc.

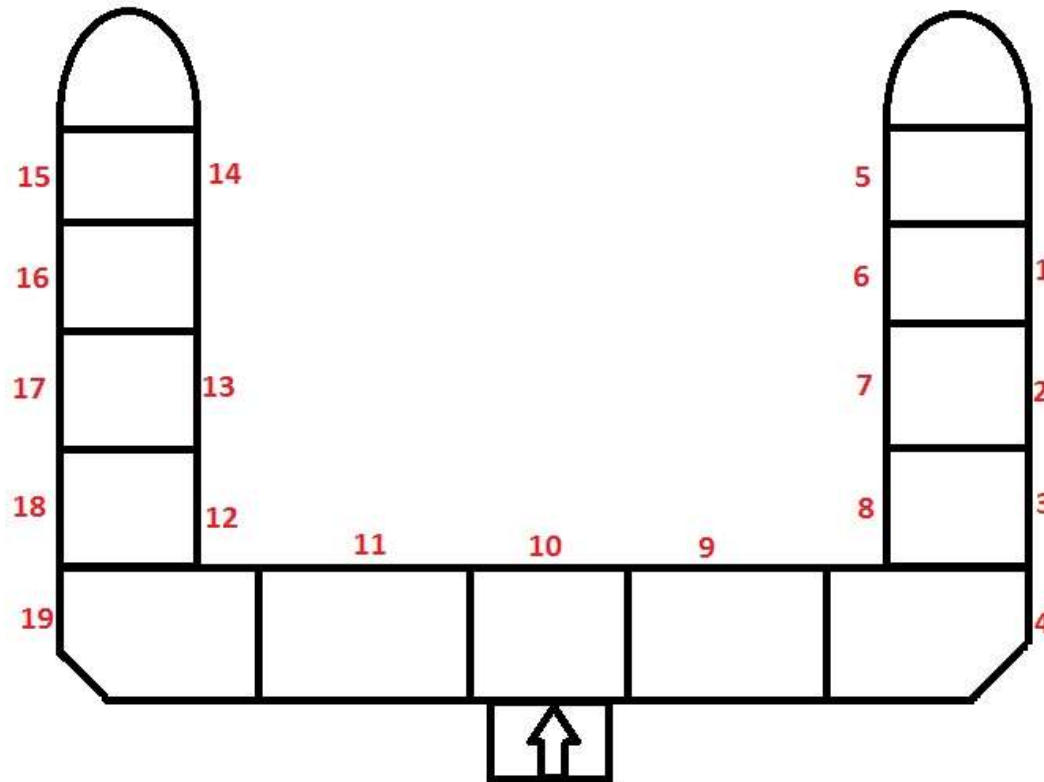
Furnace B

Date

Name of Technician

Forehearth

Endoscope Inspection Access



Access 1

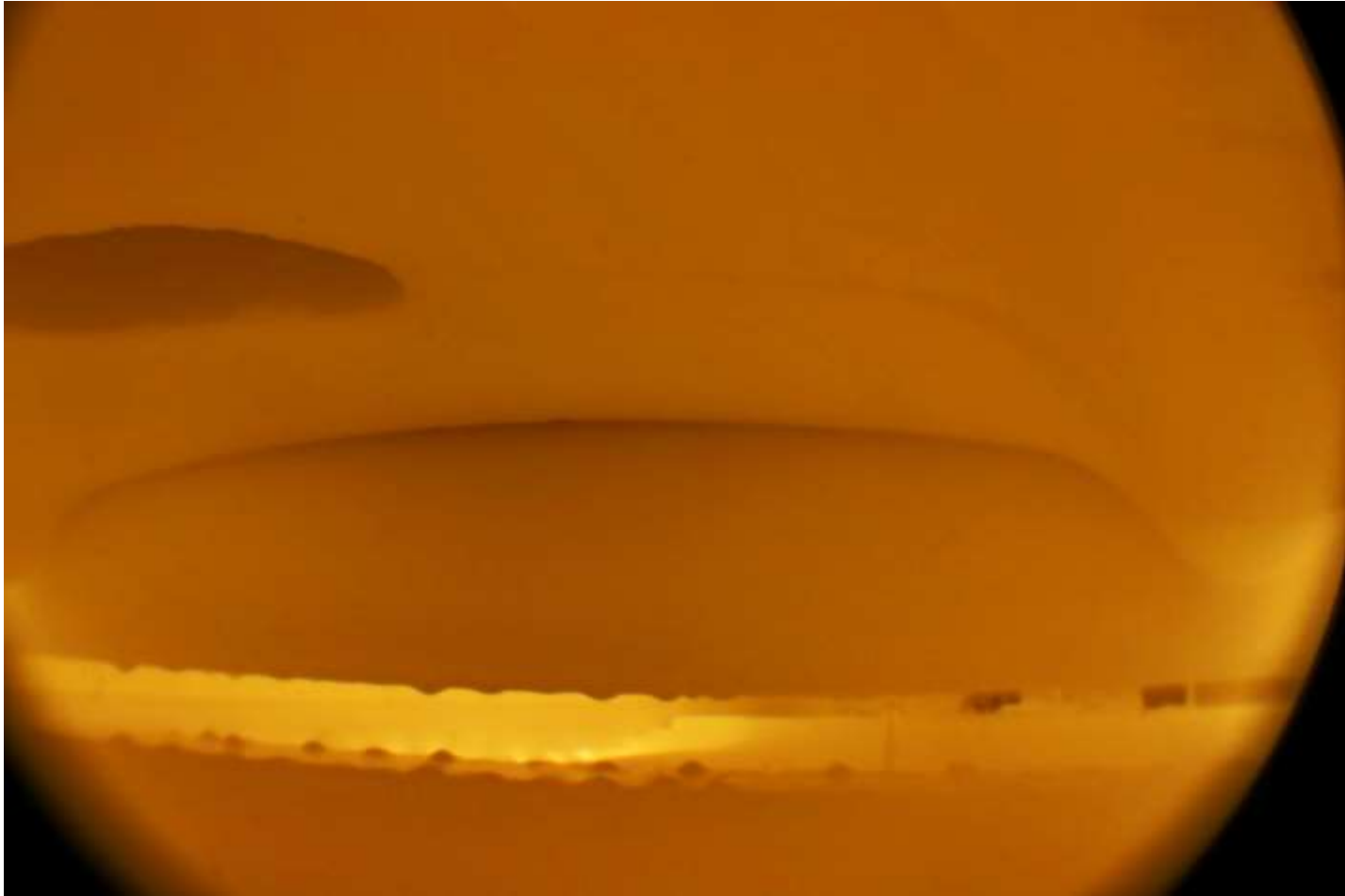
Right Channel, Downstream



Right Channel, Upstream



Center Channel, Downstream



Center Channel, Upstream



Access 2

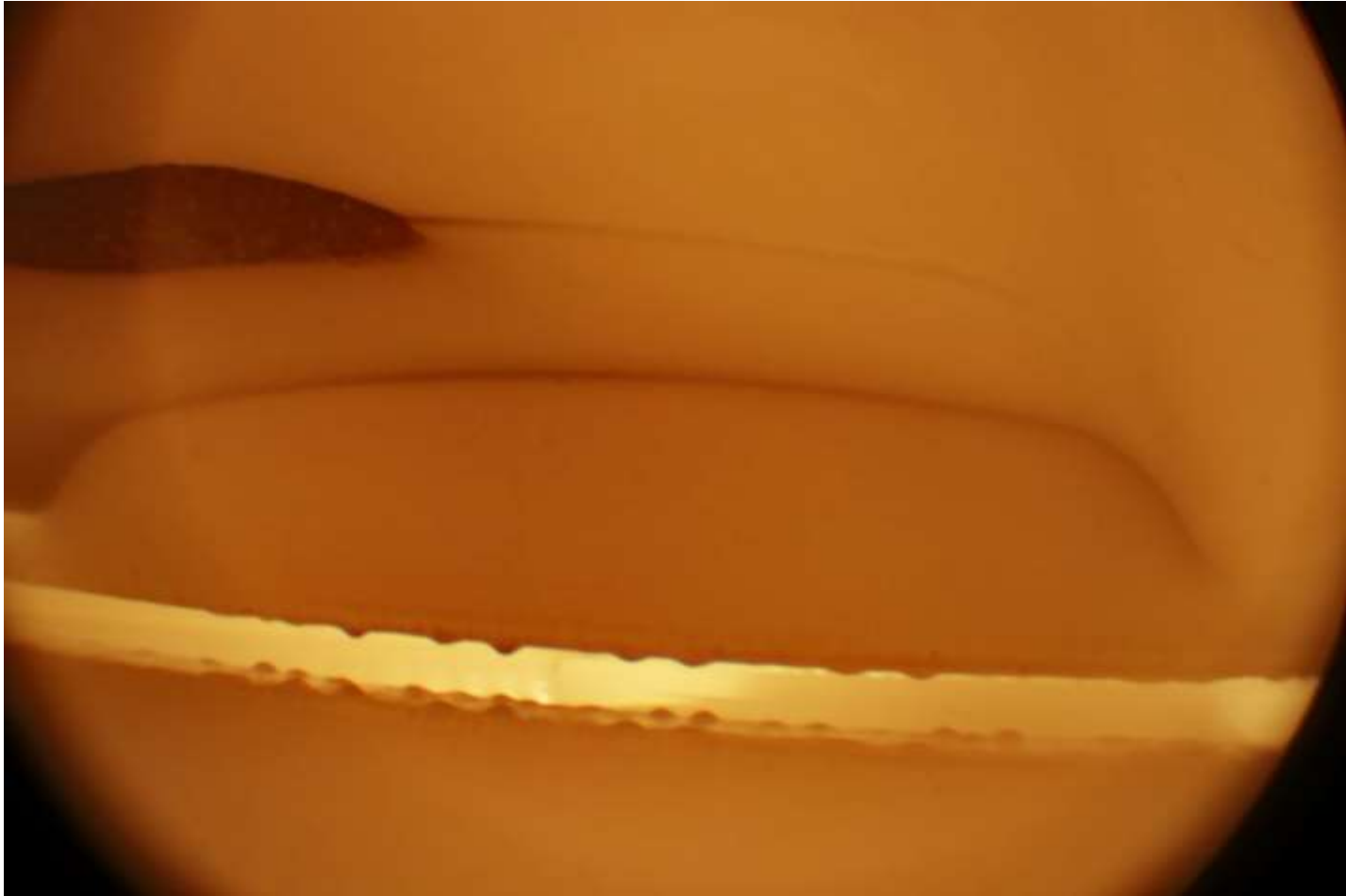
Right Channel, Downstream



Right Channel, Upstream



Center Channel, Downstream



Center Channel, Upstream



Access 3

Right Channel, Downstream



Right Channel, Upstream



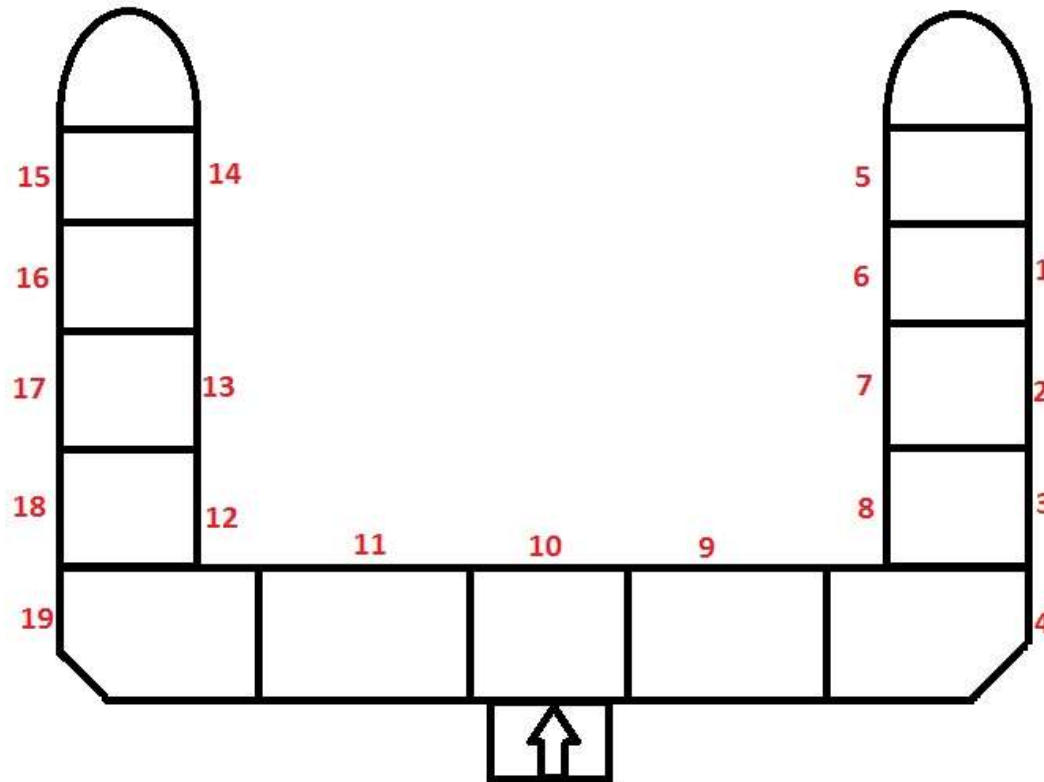
Center Channel, Downstream



Center Channel, Upstream



Endoscope Inspection Access



Access 4

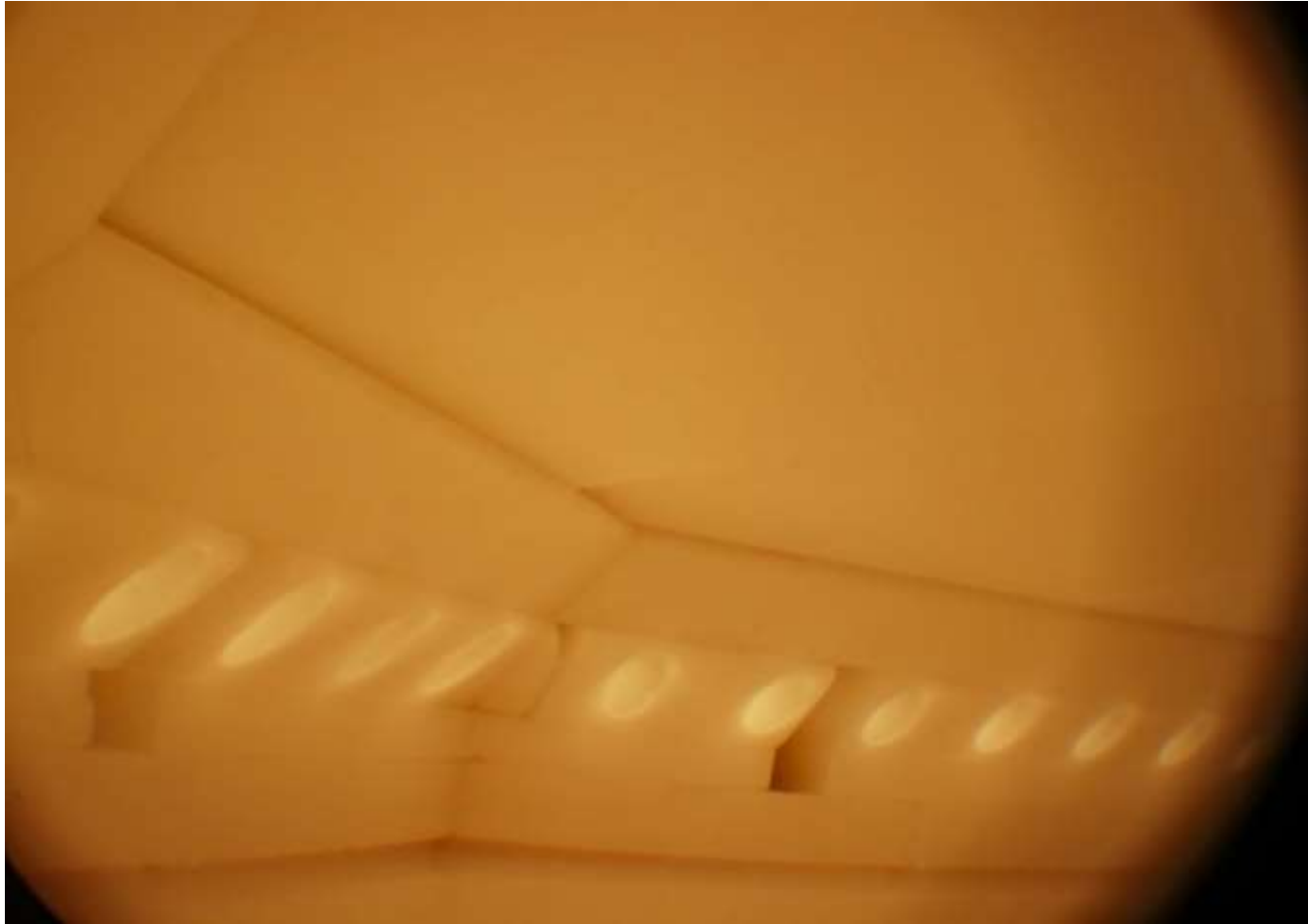
View Downstream, Right of Access



View Downstream, Right of Access



View Upstream, Left of Access



View Upstream



View Upstream



Access 5

Left Channel, View Downstream



Left Channel, View Upstream



Center Channel, View Downstream



Center Channel, View Upstream



Access 6

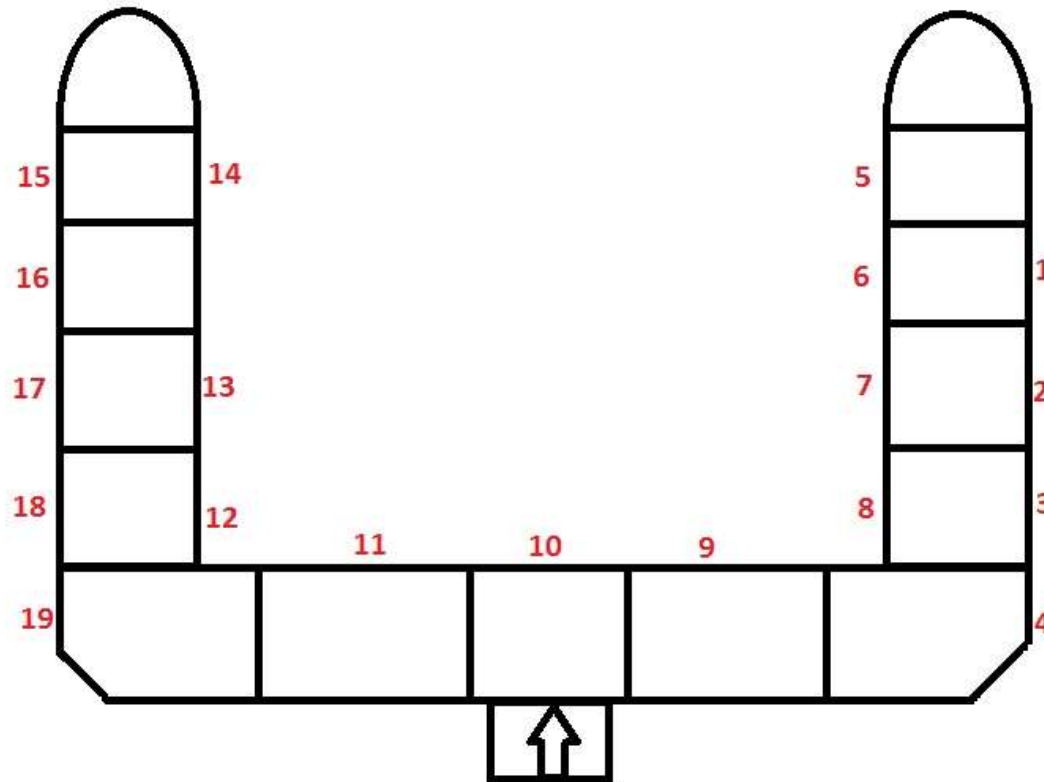
Left Channel, View Downstream



Left Channel, View Upstream



Endoscope Inspection Access



Access 7

Left Channel, View Downstream



Left Channel, View Upstream



Center Channel, View Downstream



Center Channel, View Upstream



Access 8

Left Channel, View Downstream



Left Channel, View Downstream



Center Channel, View Downstream



Center Channel, View Upstream



Access 9

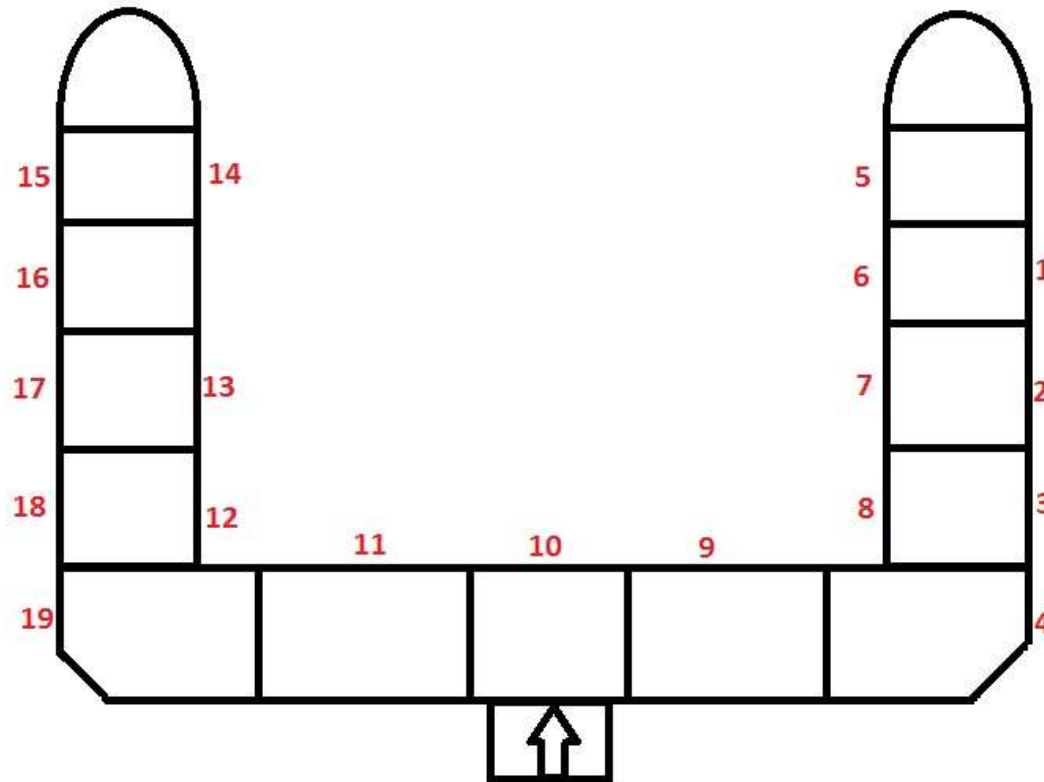
View Downstream, Left of Access



View Upstream, Right of Access



Endoscope Inspection Access



Access 10

View Downstream, Left of Access



View Downstream, Left of Access



View Downstream, Right of Access



View Downstream, Right of Access



Access 11

View Upstream



View Upstream



View Downstream



Access 12

Right Channel, View Upstream



Right Channel, View Downstream



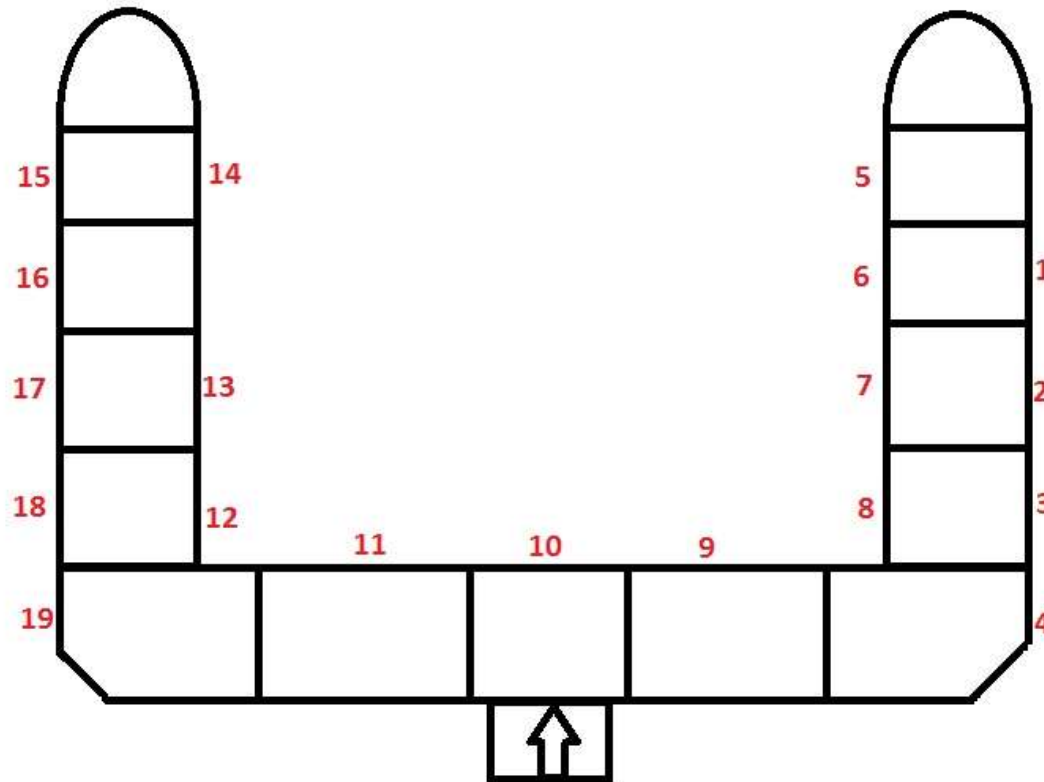
Center Channel, View Upstream



Center Channel, View Downstream



Endoscope Inspection Access



Access 13

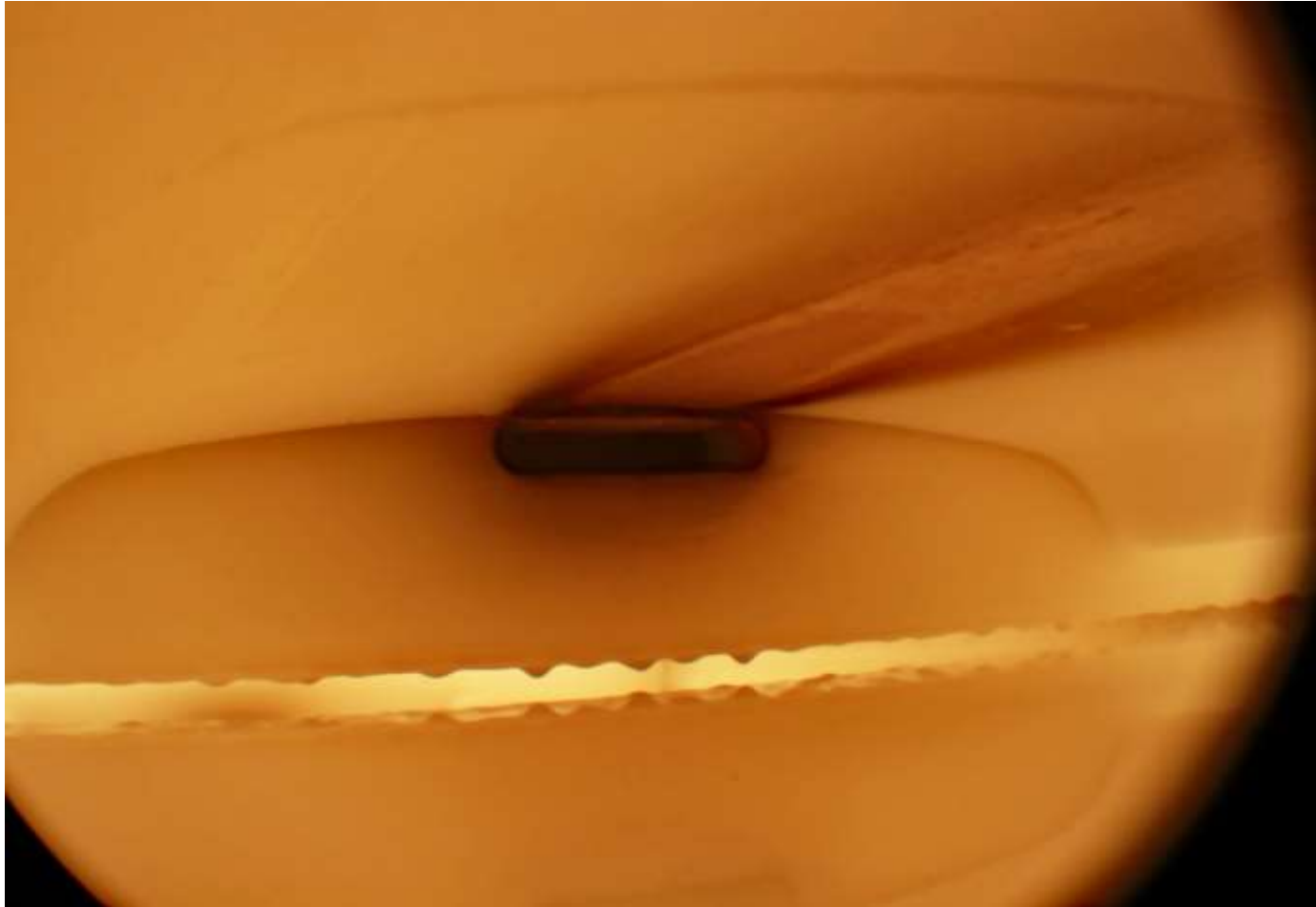
Right Channel, View Upstream



Right Channel, View Downstream



Center Channel, View Upstream



Center Channel, View Downstream



Access 14

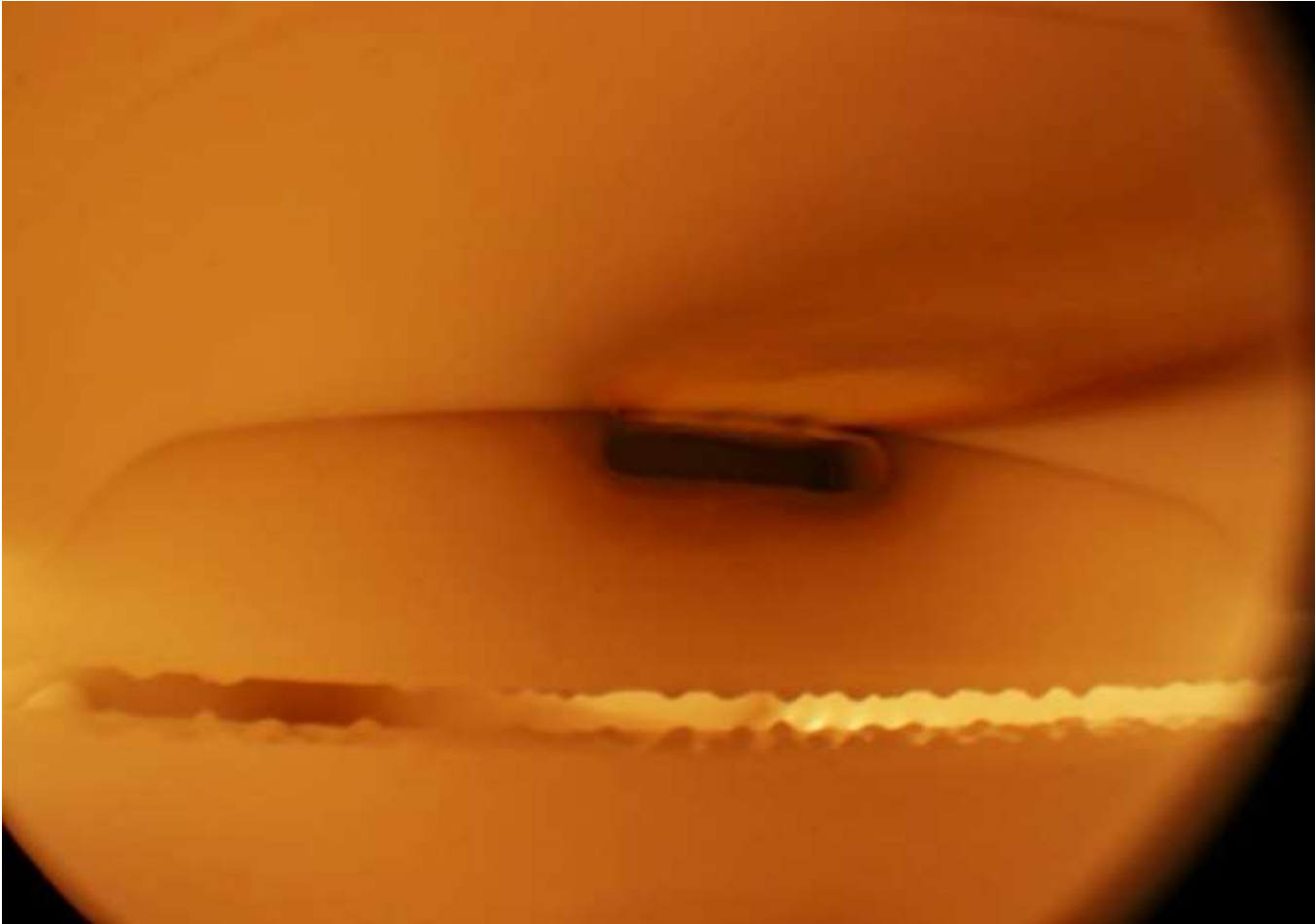
Right Channel, View Upstream



Right Channel, View Downstream



Center Channel, View Upstream



Center Channel, View Downstream



Access 15

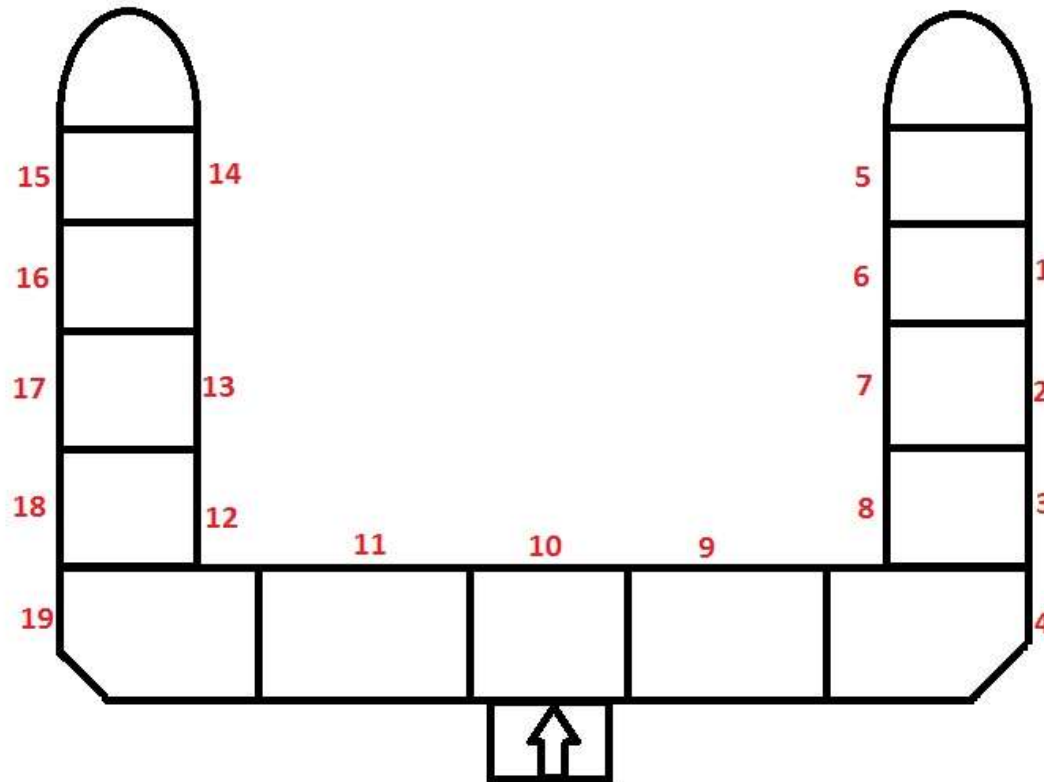
Left Channel, View Downstream



Left Channel, View Upstream



Endoscope Inspection Access



Access 16

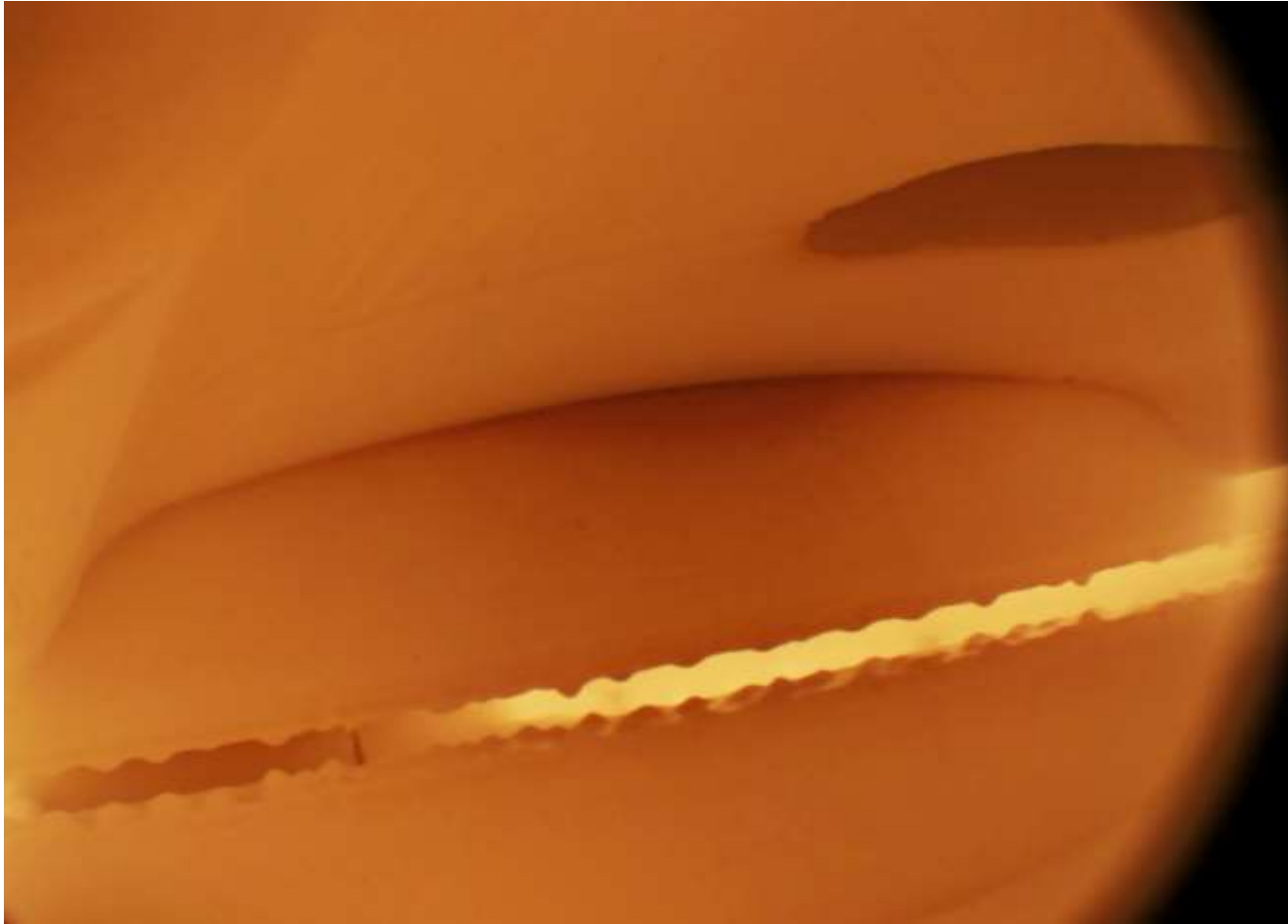
Left Channel, View Downstream



Left Channel, View Upstream



Center Channel, View Downstream



Center Channel, View Upstream



Access 17

Left Channel, View Downstream



Left Channel, View Upstream



Access 18

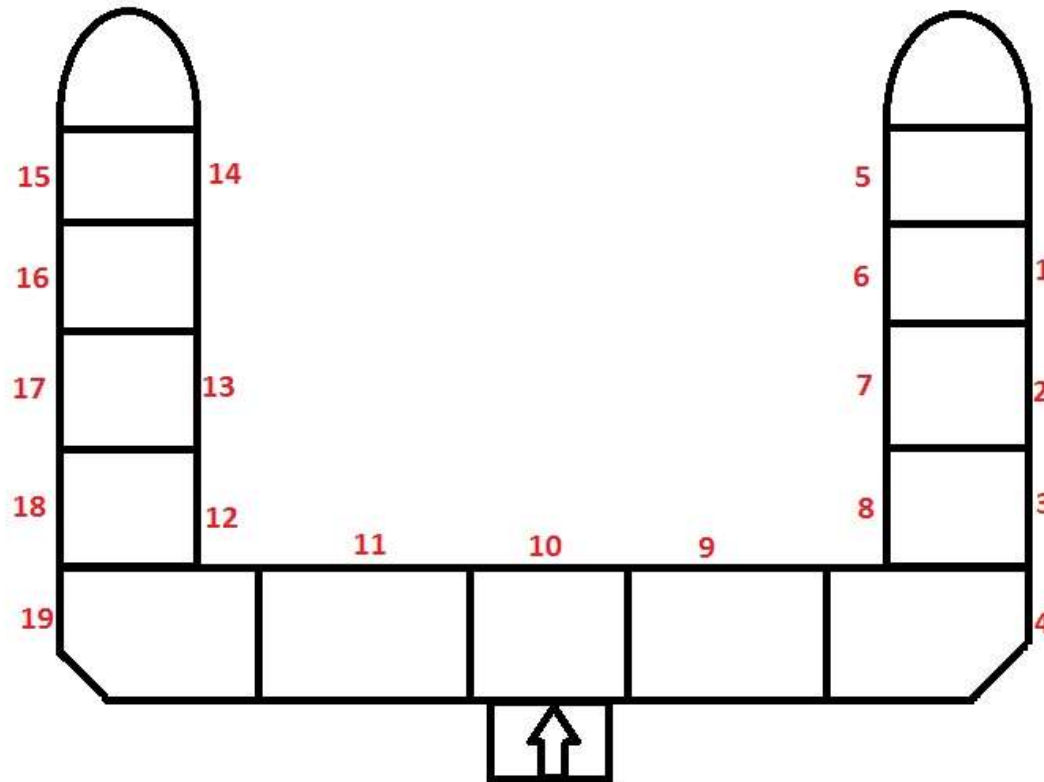
Left Channel, View Downstream



Left Channel, View Upstream



Endoscope Inspection Access



Access 19

View Downstream, Left of Access



View Downstream, Left of Access



View Upstream



View Upstream



View Upstream



View Upstream, Right of Access



View Upstream, Right of Access





Fosbel[®]

C E R A M I C T E C H N O L O G I E S

Offices located worldwide

Fosbel Headquarters

20600 Sheldon Road

Brook Park, Ohio 44142 USA

Telephone: +1-216-362-3900 Fax: +1-216-362-3901

www.fosbel.com